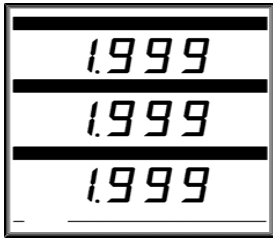


STRUMENTI DIGITALI "Multiple" **DIGITAL METERS "Multiple"**



	72 x 72	96 x 96		72 x 144		
numero di misure <i>number of measures</i>	2 misure <i>2 measures</i>	2 misure <i>2 measures</i>	3 misure <i>3 measures</i>	2 misure <i>2 measures</i>	3 misure <i>3 measures</i>	4 misure <i>4 measures</i>
codice / <i>code</i>	2MG735 ...	2MG935 ...	3MG935 ...	2MG135 ...	3MG135 ...	4MG135 ...

Comporre il codice di ogni strumento in funzione del numero e del tipo di misura usando come riferimento la scheda tecnica indicata.

Es. Strumento digitale triplo 96x96 con le misure di: tensione alternata, corrente alternata e frequenza:

MG33502 + MG33504 + MG33506 codice risultante: **3MG93502/504/506**

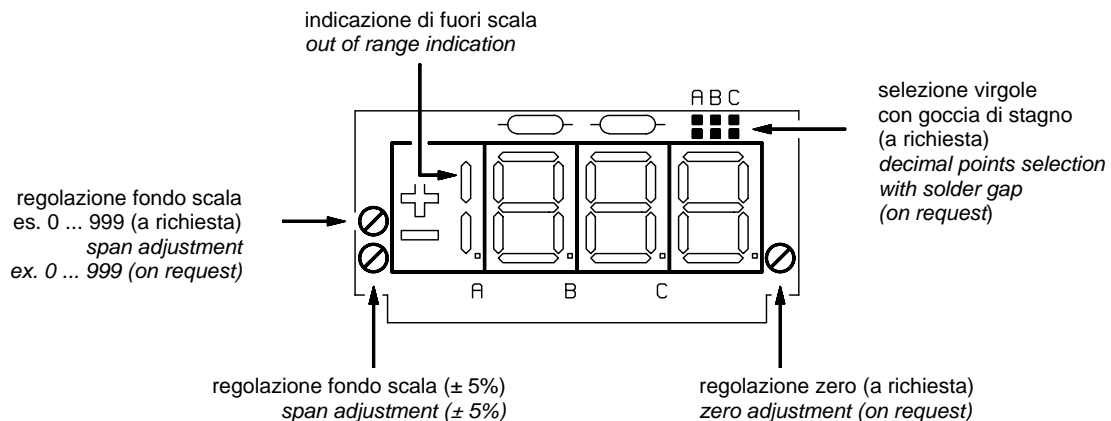
Gli schemi elettrici sono identificati solo dal suffisso in grassetto (es. per il voltmetro in alternata: **002**)

Compose the code of any meter in function of number and kind of measure referring to the above data-sheet.
Ex. 96x96 triple digital meter with the following readings: alternate voltage, alternate current and frequency:

MG33502 + MG33504 + MG33506 resulting code: **3MG93502/504/506**

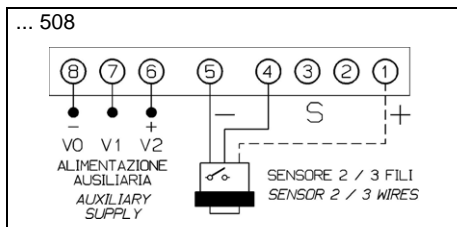
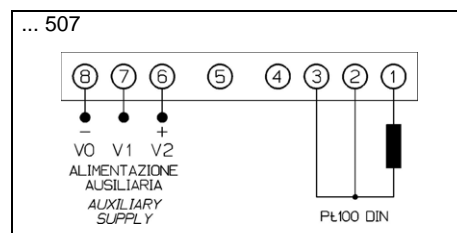
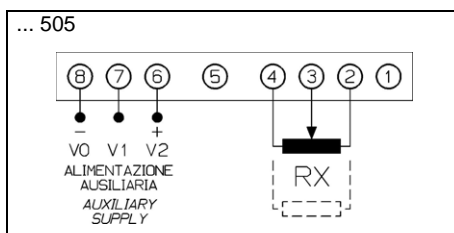
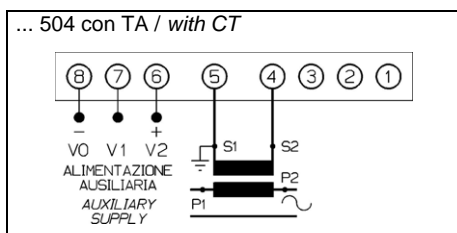
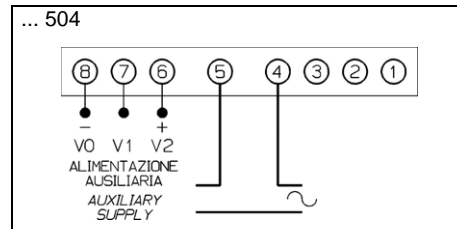
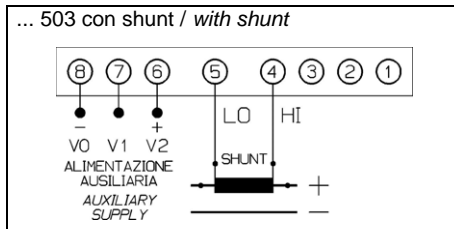
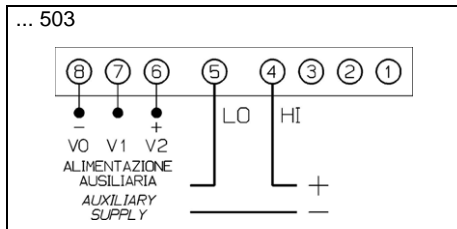
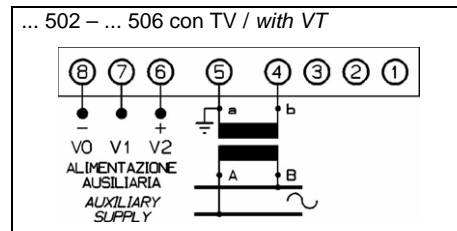
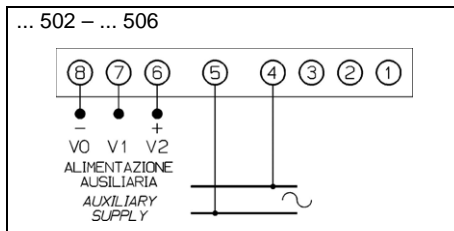
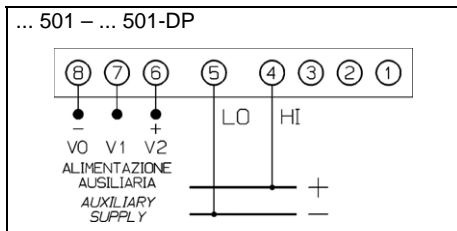
The wiring diagrams are identified by the boldface suffix (ex. for alternate voltmeter: **002**)

DISPOSIZIONE E REGOLAZIONI FRONTALI
FRONTAL ADJUSTMENTS AND LAYOUT



ATTENZIONE TENSIONE PERICOLOSA Rischio di shock elettrico e ustioni. L'apparecchio deve essere installato da personale qualificato. Togliere tensione prima di eseguire ogni tipo di lavoro e osservare le istruzioni per l'uso.
WARNING HAZARDOUS VOLTAGE Can cause electrical shock and burns. This equipment must be installed by qualified persons only. Disconnect power before proceeding with any work and observe the operating instructions.

SCHEMI D'INSERZIONE PER OGNI MISURA WIRING DIAGRAMS FOR EACH MEASURES



ALIMENTAZIONE AUSILIARIA - AUXILIARY POWER			
V c.a. 50/60Hz ±10%	V c.c. ±20 - 30%	Connessioni	Note
V a.c. 50/60Hz ±10%	V d.c. ±20 - 30%	Connexions	Notes
12, 24, 48, 58, 100, 120		V0, V2	opzione / option
115		V0, V1	standard / standard
230		V0, V2	standard / standard
	12, 24, 48, 60, 110, 220	V0 (-), V2 (+)	opzione / option

DIMENSIONI D'INGOMBRO OVERALL DIMENSIONS

